



Cola[®]Teric CBS-HP

Glycerin-Free Sultaine Amphoteric

INCI NAME Cocamidopropyl Hydroxysultaine (Fatty Acid)
CAS NUMBER 68139-30-0
LISTINGS TSCA, REACH (Pre-Registered), DSL, AICS, PICCS, IECSC, NZIoC

Cola[®]Teric CBS-HP is a glycerin-free amphoteric surfactant in the sultaine class. Cola[®]Teric CBS-HP exhibits outstanding surface activity, wetting, foaming, and compatibility in a wide variety of applications. Due to its amphoteric nature, Cola[®]Teric CBS-HP is compatible with cationic, anionic, and nonionic surfactants. The compatibility and stability of formulations containing Cola[®]Teric CBS-HP are maintained over a broad pH range.

In industrial applications, Cola[®]Teric CBS-HP is compatible and stable in systems containing acids, alkali, electrolytes and detergent builders. Cola[®]Teric CBS-HP has excellent lime soap dispersing properties. Cola[®]Teric CBS-HP is a mild detergent that will help stabilize foam and build viscosity.

Cola[®]Teric CBS-HP is free of processing aids and preservatives, allowing greater formulator flexibility for all type of cleansing formulations. Cola[®]Teric CBS-HP also displays greater hydrotropic properties than Betaines to deliver extra clarity in household and personal care formulas.

COLA[®]TERIC SULTAINES ARE "GREENER"

More natural raw materials are used in the manufacture of Cola[®]Teric cocamidopropyl hydroxysultaine than other leading brands. For formulators interested in making their product more eco-friendly, Cola[®]Teric sultaines offer greener and more sustainable characteristics.

BENEFITS

- High foaming amphoteric surfactant derived from fatty acids
- Mild on skin and eyes
- High electrolyte tolerance
- Compatible with a broad surfactant range
- Develops higher viscosity than the triglyceride-based Cola[®]Teric CBS
- No preservatives

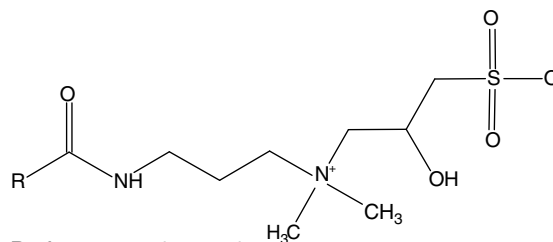
APPLICATIONS

- Shampoos, Bath Gels, Body Washes
- Liquid Hand Soaps
- Towelettes for Personal Care
- Transportation Washes

Typical Use Level: 1 – 10%

TYPICAL PROPERTIES / STRUCTURE

Appearance	Clear Yellow Liquid
Ionic Character	Amphoteric
Solids, %	48.0 – 50.0
NaCl, %	7.0
pH (10% as is in deionized water)	7.5 – 8.5
Color, Gardner '98	2
% Glycerin	0



R - from Coco/Palm Kernel

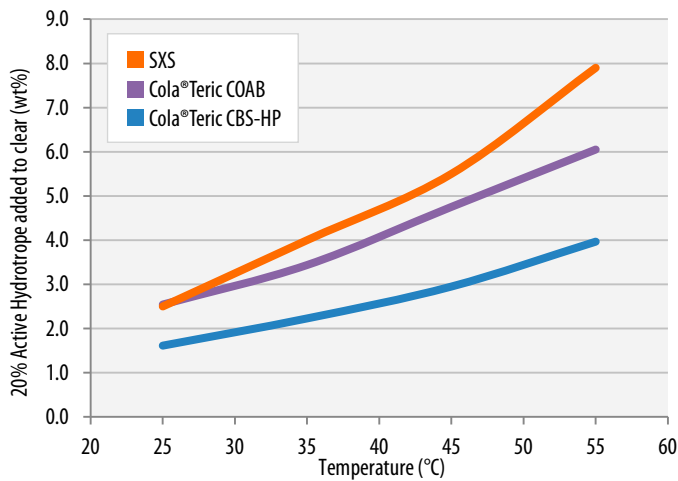
WETTING AND FOAM PERFORMANCE

Draves Wetting, 1% active, sec	25.4		
Ross-Miles	Immediate	1 min	5 min
1% active, tap water	190	175	170
1%, 2% NaCl water	195	175	165

Cola[®]Teric CBS-HP is Readily Biodegradable (OECD 301D; 28 days)

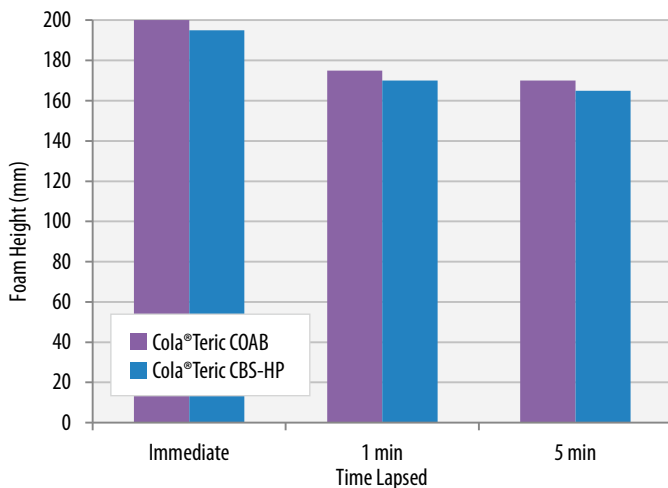
Cola[®]Teric CBS-HP is rated as 75% biobased.

HYDROTROPE PERFORMANCE TEST



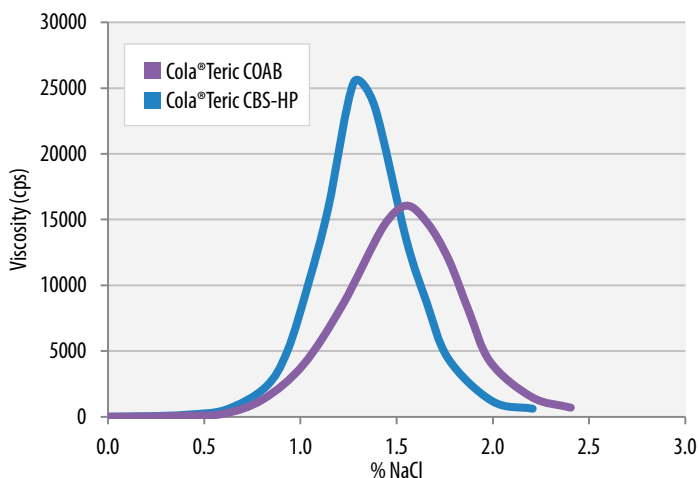
20% Active Cola®Teric Comparisons • Solution: 1% Surfonic L12-6 in 10% KOH

FOAM PERFORMANCE TEST



Test Solution: Water, SLS, SLES-2, Amphoteric
COAB: 75/10/10/5; CBS-HP: 76.3/10/10/3.7

SALT PERFORMANCE TEST



Test Solution: Water, SLS, SLES-2, Amphoteric + Cola®Liquid DC (all) 1.5
COAB: 75/10/10/5; CBS-HP: 74.8/10/10/3.7

FORMULATION *Natural, Sulfate-Free Bath Gel*

INGREDIENT	%
1 Water	qs to 100.00
2 Suga®Nate 160NC	19.20
3 Cola®Mate LA-40	4.00
4 Cola®Teric CBS-HP	9.60
5 Fragrance (Island Luau)	0.20
6 Preservative (Kathon CG)	0.05
7 Citric Acid	qs to pH 5.3

Procedure:

Combine ingredients 1-2. Heat to 45°C. Add remaining ingredients. Adjust pH to 5.0 - 5.5 with citric acid.

Typical Properties:

Appearance: Clear pH: 5.3 Viscosity: 7200 cps

STORAGE / HANDLING

Cola®Teric CBS-HP should be stored in closed containers. Frozen material may be thawed in a warm room, venting drums while warming. Shipped in 55 gallon poly drums (net weight 500 lb/227 kg). Typical shelf life is 24 months from date of manufacture. Safety Data Sheets may be found at www.colonialchem.com.

ADDITIONAL LISTINGS



Whole Foods Premium Body Care
USDA Biopreferred Product



Colonial Chemical

225 Colonial Drive • South Pittsburg, TN 37380
Phone: 423-837-8800 • Fax: 423-837-3888
www.colonialchem.com

Innovative Specialty Surfactants